



## Product Information: Paperless Process Recorder

FOOD

# Paperless Process Recorder with Legendary™ Cloud Software

## Application/Specified Usage

- Paperless process recorder, PMO compliant, M-b 383 issued
- Drop-in replacement for Anderson-Negele and most competitor existing paper recorders

## Application Examples

- Continuous pasteurization in HTST, UHT, and Aseptic ranges
- Cold Product Recording
- Clean-In-Place (CIP)
- Clean-Out of-Place (COP)
- Juice Pasteurization
- Egg Pasteurization
- ESL Applications
- General Process Recording and Monitoring

## Features

- 10" touchscreen display
- Pre-configure system information like operator list, product types, tank or silo list etc.
- Create and select from list of common annotations
- Scroll through all historical trends in local PPR display
- Internal redundant storage for data (up to 7 years) and charts (last 100 days)
- Unlimited cloud storage for both data and charts
- Data encryption during transmission to backup servers, preventing interception or falsification of records
- NEMA 4X enclosure

## Advantages

- Create audit ready digital records that meet both your internal and PMO requirements
- Streamlined annotation and approval workflow for both on-premise PPR and Legendary™ cloud software
- Intuitive digital annotation including list of pre-populated common annotations
- Supervisors, quality team and PCQI can remotely review records, request additional notes from operators, and approve records
- Secure storage and access of all historical records for authorized users

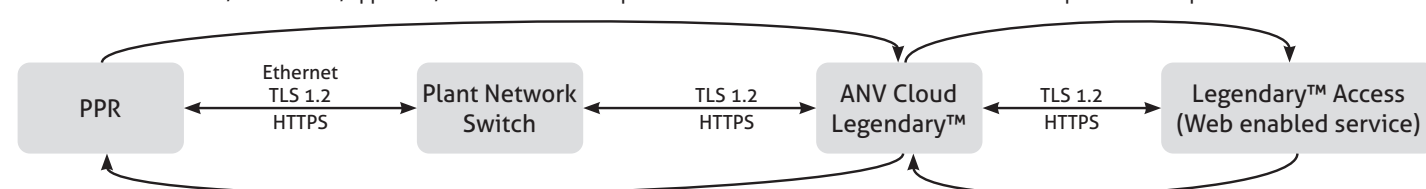
## System Overview

### API Call from PPR to Legendary™

- Send new and revised charts for review, approval and backup
- Send task and approval updates
- Check for new tasks, annotations, approvals, workflow and user updates

### Read from Legendary™ by web-enabled device

- Access legal records for review and approval
- Track approval status of legal records
- Track status of responses from operator and other associates



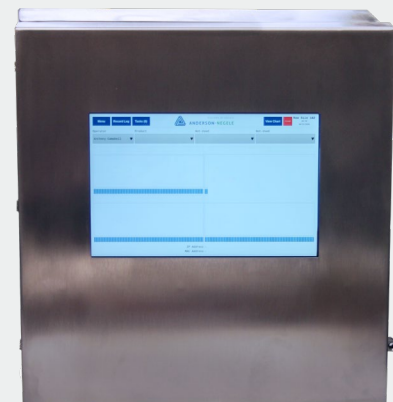
### API Response from Legendary™ to PPR

- Respond with new tasks, annotations, approvals, workflow, and user updates

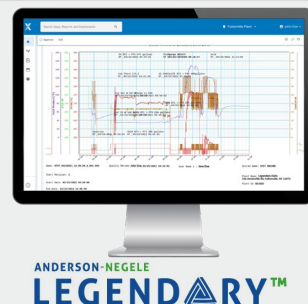
### Write from web-enabled device to Legendary™

- Add notations
- Assign tasks (e.g. request annotation or more information)
- Add approvals

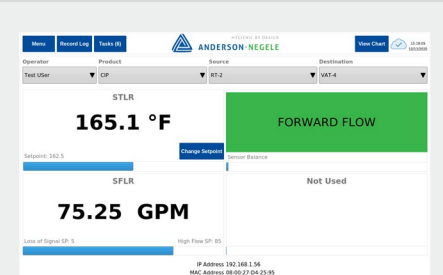
## Paperless Process Recorder (PPR)



## Legendary™ Cloud Software

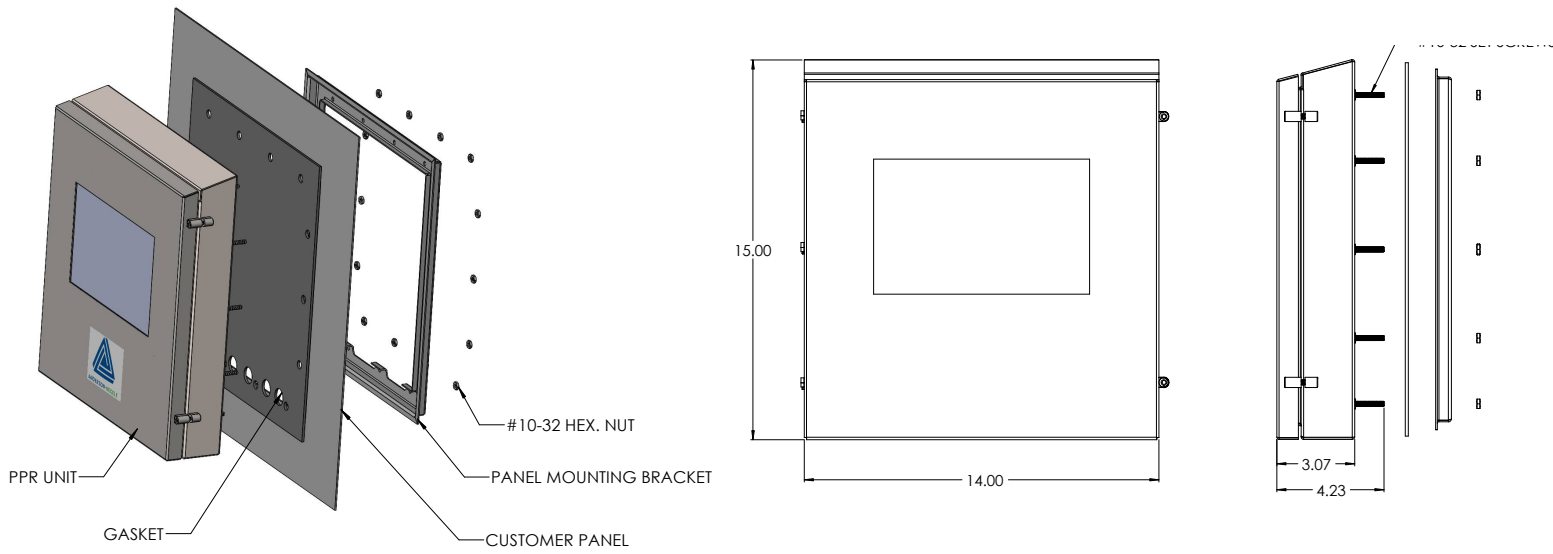


## Touchscreen Display Interface

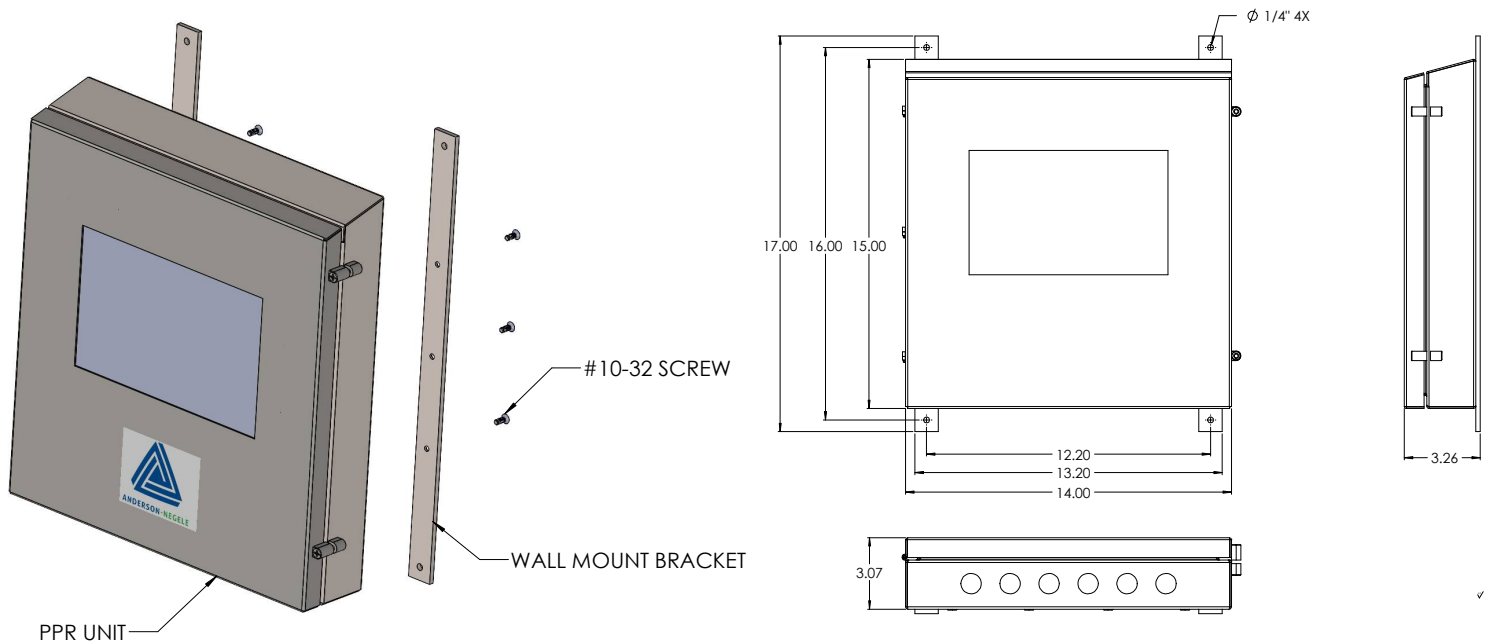


Specification			
Inputs	Number of Inputs	STLR & SFLR - Up to 4 / Non-STLR & Non-SFLR - Up to 8	
	Current	0-20mA, 4-20mA	
	Voltage	0-25mV, 0-100mV, 0-1V, 0-10V, 1-10V	
	RTD	Pt100 or Pt1000, 2 or 3 wire	
	Scan Rate	100ms	
	Recording Rate	3 seconds	
	Recording Accuracy	+/- 0.3% of span	
Outputs	Ambient Temperature Effect	+/- 0.005% of span per °F deviation from 77°F (0.01% / °C from 25 °C)	
	mA Outputs	Up to 4; 0-20mA, 4-20mA	
	Relay Outputs	Up to 4; Mechanical SPDT, Normally Open or Closed	
	Digital Alarms	Contacts rated at 5 amps resistive at 115 VAC, 2.5 amps resistive at 230 VAC Up to 16	
Backup Storage	Removable Storage	supplied with 32GB microSD card. Contains last 100 days of Record Images & 24 hour backup record images	
	Non-Removable Storage	4 GB eMMC (Up to 7 years of raw data and annotations. Accessible only through HMI. Cannot be exported.)	
	Cloud Storage	Unlimited storage of all PPR created record images in Legendary™	
Interface	Display	10" 1280x800 Touchscreen display with chemically strengthened glass with shatterproof screen protector	
	Operating System	Embedded Linux	
Cloud	Network	Ethernet/RJ45	
	Server	AWS	
	Destination Domain	<a href="https://clients.intellex.com">https://clients.intellex.com</a> , <a href="https://preprod-na.intellex.com">https://preprod-na.intellex.com</a> and their subdomains	
	TCP and UDP Ports	HTTP(80), HTTPS(443), DNS(53), SSH(22)	
	Encryption	HTTPS / TLS 1.2 or above	
	Data Format	JSON	
	Sync frequency	15 minutes	
Power	IP Address	Dynamic or Static	
	Voltage	24-30VDC Max. Minimum 20V at PPR power supply terminals	
Enclosure	Current	Max 2 amperes	
	Mounting Option	<b>Wall Mount / Surface Mount</b>	<b>Panel Mount (Through Panel)</b>
	Material	Stainless Steel	Stainless Steel
	Conduit Openings	Qty. 6, 7/8" diameter, Located on bottom	Qty. 6, 7/8" diameter, Located on back
	Overall Dimensions	14"W x 15"H x 3"D	14"W x 15"H x 3"D
	Panel Depth	N/A	1.25"
	Panel Cutout	N/A	12.7"W x 12.7" H + 6 holes for wiring
	Front Panel Protrusion	N/A	3"
	Water Ingress Rating	NEMA 4X	NEMA 4X
	Weight	16 lbs.	16 lbs.
	Vibration	3 to 100 Hz @ 0.2g	3 to 100 Hz @ 0.2g
	Accessories	Wall mount brackets and screws	Panel mounting bracket, gasket and nuts
Environment	Operating Temperature	32-122°F	
	Humidity	10 to 90% RH, non-condensing	
Approvals	PMO	M-b 383	
	Electrical	CE	
	Water Ingress Rating	NEMA 4X	
Warranty		2 Years	

## Dimensional Drawings - Panel Mount, Back Wiring



## Dimensional Drawings - Wall Mount, Bottom Wiring



Product code										
PPR	<b>Paperless Process Recorder</b> <b>NOTE: Requires Annual Legendary™ Cloud Subscription</b>									
	<b>Safety Thermal Limit Recorder (STLR)</b>									
XX	None <b>NOTE: STLR options below include STLR relay and two input cards for dual PT1000 RTD</b> <b>STLR options require dual PT1000 sensor like SB probe (not included see page 5)</b>									
TD	STLR with 24VDC relay									
T1	STLR with 110VAC relay									
T2	STLR with 220VAC relay									
	<b>Safety Flow Limit Recorder (SFLR)</b>									
X	None									
F	SFLR (only available with STLR option TD, T1, or T2; includes SFLR relay, one 4-20mA input card for SFLR and one additional universal input card)									
	<b>Fixed</b>									
XX	<b>Transmitter Power Supply</b>									
X	None									
4	4 Isolated 24VDC Supplies									
8	8 Isolated 24VDC Supplies									
	<b>Additional Analog Inputs (Transmitter power supply not included, see spare parts)</b> With STLR Option XX									
4U	Four Inputs									
8U	8 Inputs									
XX	With STLR Option TD, T1, or T2 None									
	<b>mA Outputs/Re-Transmission</b>									
XX	None									
2A	Two - Internally powered									
4A	Four - Internally powered									
	<b>Additional Relay Outputs</b>									
XX	None									
2R	Two									
4R	Four									
	<b>Enclosure</b>									
W	Wall Mount, Bottom Wiring									
P	Panel Mount w/Enclosure, Back Wiring									
	<b>Tamper Evident Sealing Covers</b>									
X	No (Only available with STLR Option XX)									
S	Yes									
	<b>Fixed</b>									
XXXXXX										
PPR	TD	F	XX	X	XX	4A	4R	W	S	XXXXXX

#### STLR AND SFLR LEGENDARY™ CLOUD SOFTWARE SUBSCRIPTIONS

Subscription purchase order must be sent to [orders@anderson-negele.com](mailto:orders@anderson-negele.com) directly by the end customer along with form 10035 Legendary™ Specification Sheet. Subscription fee is per PPR.

CS-LD-36-XXXXXX 3 year subscription

CS-LD-60-XXXXXX 5 year subscription

#### NON-STLR AND NON-SFLR LEGENDARY™ CLOUD SOFTWARE SUBSCRIPTIONS

NS-LD-36-XXXXXX 3 year subscription

NS-LD-60-XXXXXX 5 year subscription

#### IMPLEMENTATION SERVICE

Implementation Service includes pre-configuration of PPR and Legendary™ to customer specific requirements

CS-LD-XX-STRTUP PPR and Legendary™ Implementation Service

#### STLR STARTUP KIT

57219A0001 Transfer Switch Box for Series Recorder Control

SB...PPR... Dual Head SB (See STLR Sensor Product Code on Page 5)

CS-LD-XX-STRTUP PPR and Legendary™ Implementation Service

## STLR Sensor Product Code

**SB-**

**FITTING**

004 1-1/2" Tri-Clamp  
 005 2" Tri-Clamp  
 006 2-1/2" Tri-Clamp  
 007 3" Tri-Clamp  
 008 4" Tri-Clamp  
 061 Split Ferrule (button)  
 119 3/4" Swagelok <sup>1</sup>  
<sup>1</sup> Not 3-A Compliant

**HOUSING**

1 Straight  
 2 Bent (for clearance  
 22-1/2° - split ferrule only)

**PROBE LENGTH**

025 2" (std. for 119 fitting)  
 081 5-1/2" (standard)  
 109 7-1/4"

**CABLE LENGTH**

00 No Cable  
 01 25'  
 02 50'  
 03 75'  
 04 100'

**PPR**

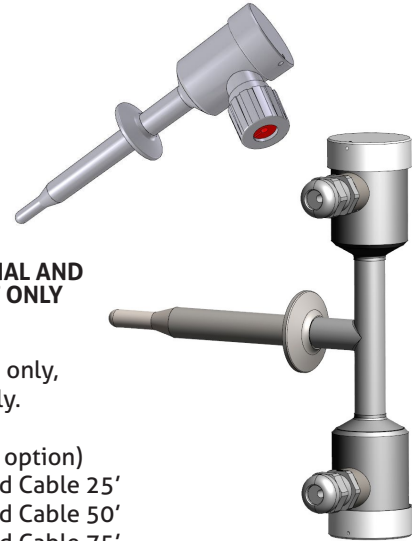
**RTD for SECOND HEAD**  
 M Dual PT1000 RTD<sup>2</sup>  
 L Dual PT100 RTD<sup>2</sup>

**DUAL HEAD SB**

--- LAST 4 CHARACTERS ARE OPTIONAL AND  
 USED FOR PPR STLR STARTUP KIT ONLY

<sup>2</sup> Available with Housing Option 1 only  
 Available with Cable Length option 00 only,  
 cables need to be purchased separately.

SB Cables: (2X required for PPR matrix option)  
 SP42035C0005 - 6 Conductor Shielded Cable 25'  
 SP42035C0010 - 6 Conductor Shielded Cable 50'  
 SP42035C0015 - 6 Conductor Shielded Cable 75'  
 SP42035C0020 - 6 Conductor Shielded Cable 100'



## Spare Parts - Electrical

SP46835A0001	Universal Input Card (1 mA/Pt100 RTD/V input) - U Module
SP46837A0001	STLR Input Card (Pt1000 RTD) - R Module
SP46836A0001	mA Output Card (2 mA outputs) - L Module
SP57248A0001	Relay Output Card, 2 Relays kit
SP57247A0001	Relay Output Card, 4 Relays kit
SP42064B0003	3V Coin Cell Battery
SP57204A0002	LVDS Cable for Touchscreen Display
SP46840A0001	USB Cable for Touchscreen Display
SP46841A0001	32 GB MicroSD Memory card
SP57241A0001	24VDC Transmitter Power Supply kit (4X Isolated Supply)
SP57241A0002	24VDC Transmitter Power Supply kit (8X Isolated Supply)
SP57243A0001	STLR Relay Board kit, 220VAC
SP57243A0002	PPR STLR Relay Board kit, 110VAC
SP57243A0003	STLR Relay Board kit, 24VDC
SP57249A0001	SFLR Relay Output Card
SP46873A0001	PE WIRE 200mm GNYE WITH RINGS
SP42040E0004	PPR FUSE W/O HOLDER (Kit of 5)

## Spare Parts - Mechanical

SP57202A0001	Enclosure with display, panel mount, wiring from back, Non-STLR
SP57202A0002	Enclosure with display, wall mount, wiring from bottom, NON-STLR
SP57202A0003	Enclosure with display, panel mount, wiring from back, STLR
SP57202A0004	Enclosure with display, wall mount, wiring from bottom, STLR
SP44390A0001	Rubber Grommets (Up to 6 required per PPR)
SP57216A0001	Panel mount bracket hardware kit without gasket
SP57216A0002	Wall mount bracket hardware kit
SP46825A0001	Panel mount gasket
SP57240A0001	Main Board Sealing Cover Kit
SP57239A0001	STLR/SFLR Sealing Cover kit
SP46849A0001	Touchscreen Display Screen Protector Kit
SP57207A0001	PPR DOOR ASY W/LCD

## Notes

ANDERSON-NEGELE  
156 Auriesville Road  
Fultonville, NY 12072

Phone: 800-833-0081  
Fax: 518-922-8997  
info@anderson-negele.com

Technical Support  
PPR-LD-AE@anderson-negele.com  
Phone: 800-833-0081