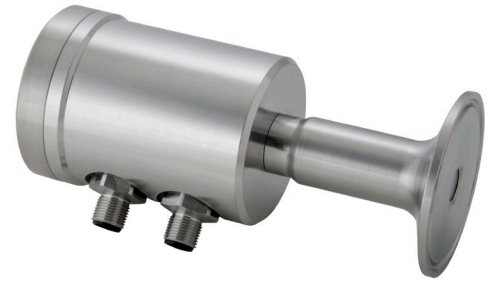


ITM-51 Signal Module Output and Electrical Connection Selection



Signal Module Output

The following Analog transmitter modules, on the ITM-51 turbidity sensor, have been replaced by IO-Link capable transmitter modules:

- A52 is now **I52**
- A53 is now **I53**

What does this mean?

If you are using an ITM-51 in an Analog capacity - there is no change to you other than ordering an "I" signal module instead of an "A" signal module.

Electrical Connection

If you wish to utilize the **IO-Link capability** on the ITM-51, you must order the "**R**" **Electrical Connection**. In addition, you must use an IO-Link Master in order to utilize the IO-Link capability. Anderson-Negele does NOT provide the IO-Link Master. For more information on IO-Link, please see <https://io-link.com/en/index.php>

If you wish to use the ITM-51 in an **Analog capacity**, the options you have always ordered remain the same:

D: 2 x cable gland M16 x 1.5 (only available for ANALOG Signal Module Output options I52 and I53; NOT IO-Link capable)

N: 2 x M12 plug 4-pin output / input, 5-pin power supply (only available for ANALOG Signal Module Output option I52 and I53; NOT IO-Link capable)

A: 2 x M12 plug 4-pin power supply, 5-pin output / input (only available for ANALOG Signal Module Output option I52 and I53; NOT IO-Link capable)